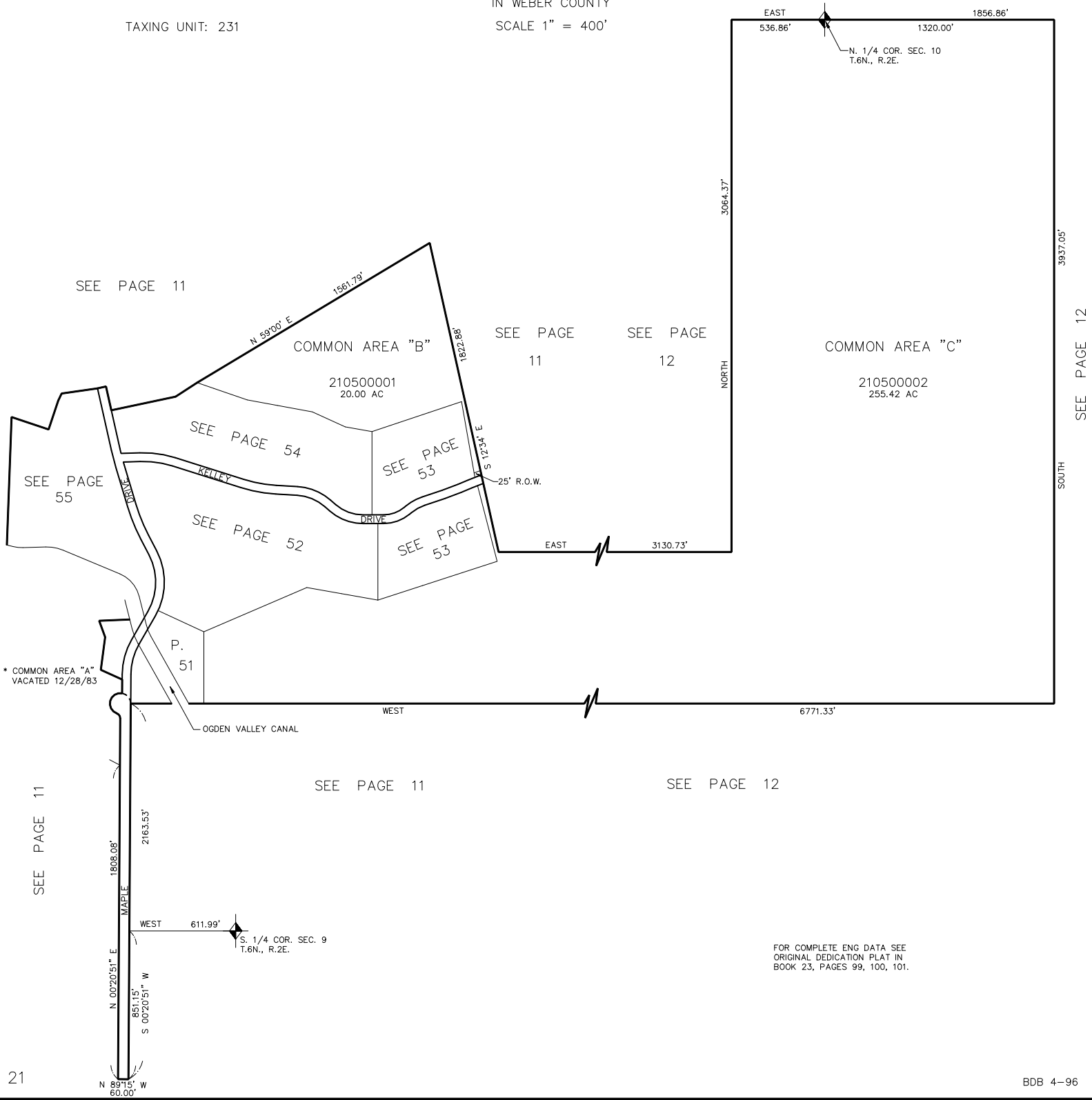


PART OF SECTIONS 9, 10, & 16, T.6N., R.2E., S.L.B. & M.  
GREEN HILL COUNTRY ESTATES PHASE NO. 1

IN WEBER COUNTY  
SCALE 1" = 400'

TAXING UNIT: 231



FOR COMPLETE ENG DATA SEE  
ORIGINAL DEDICATION PLAT IN  
BOOK 23, PAGES 99, 100, 101.